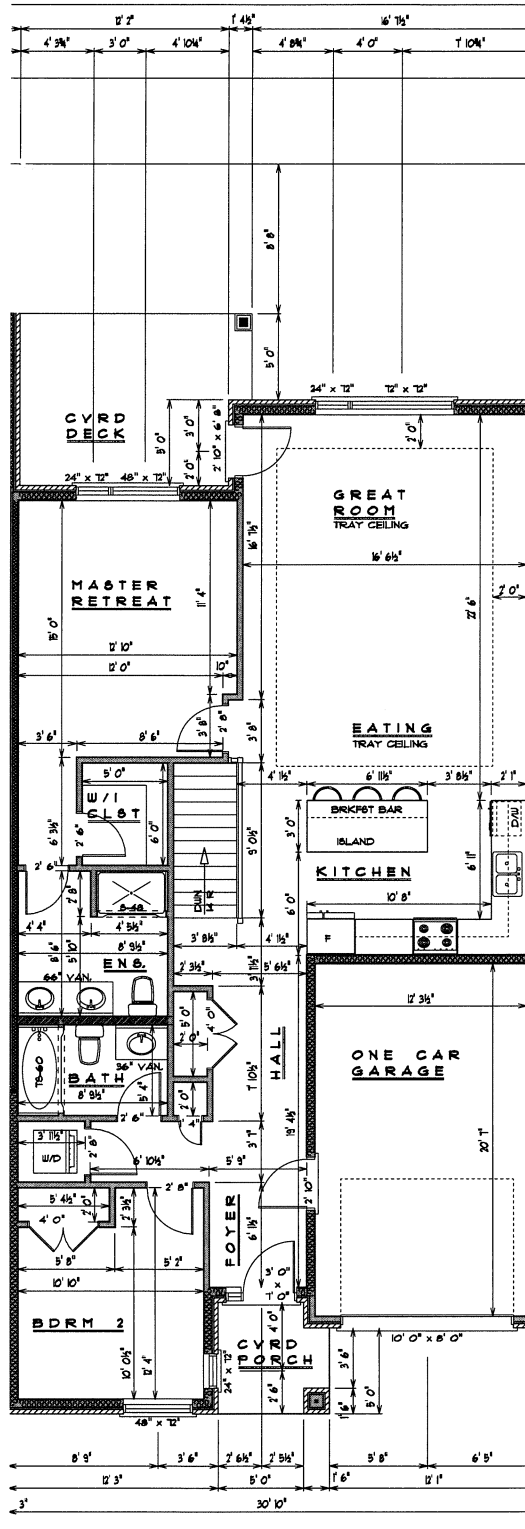
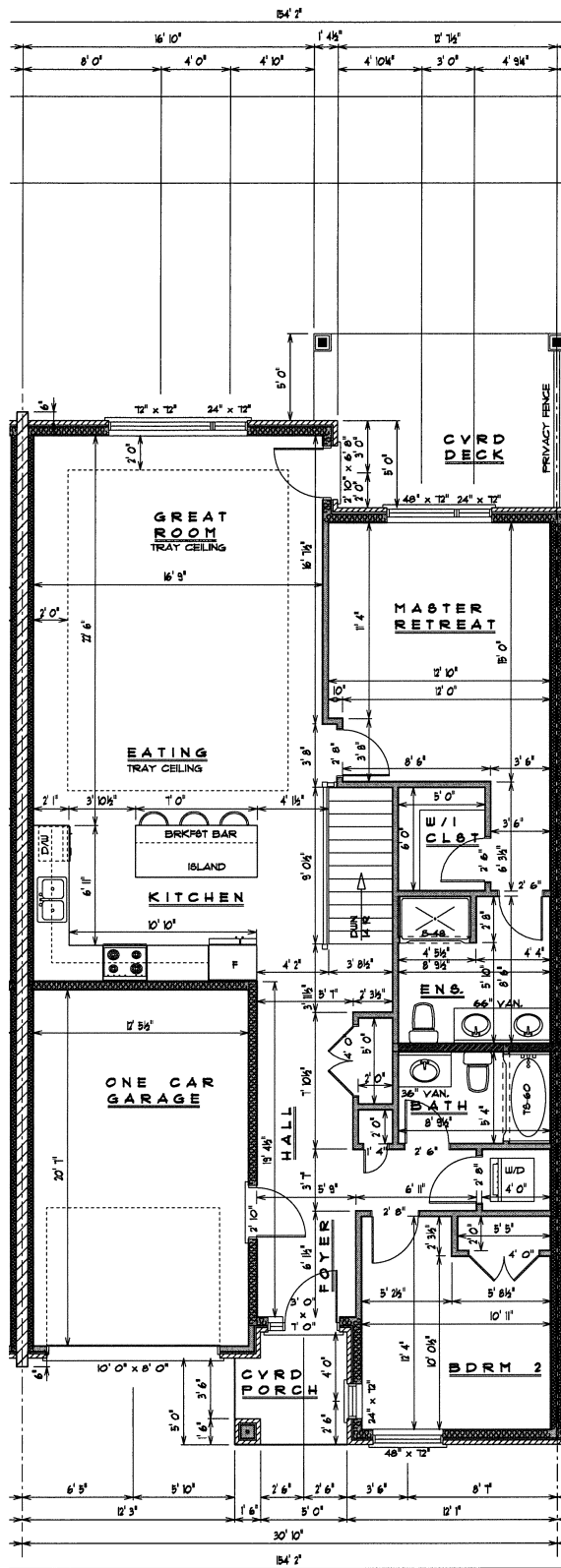


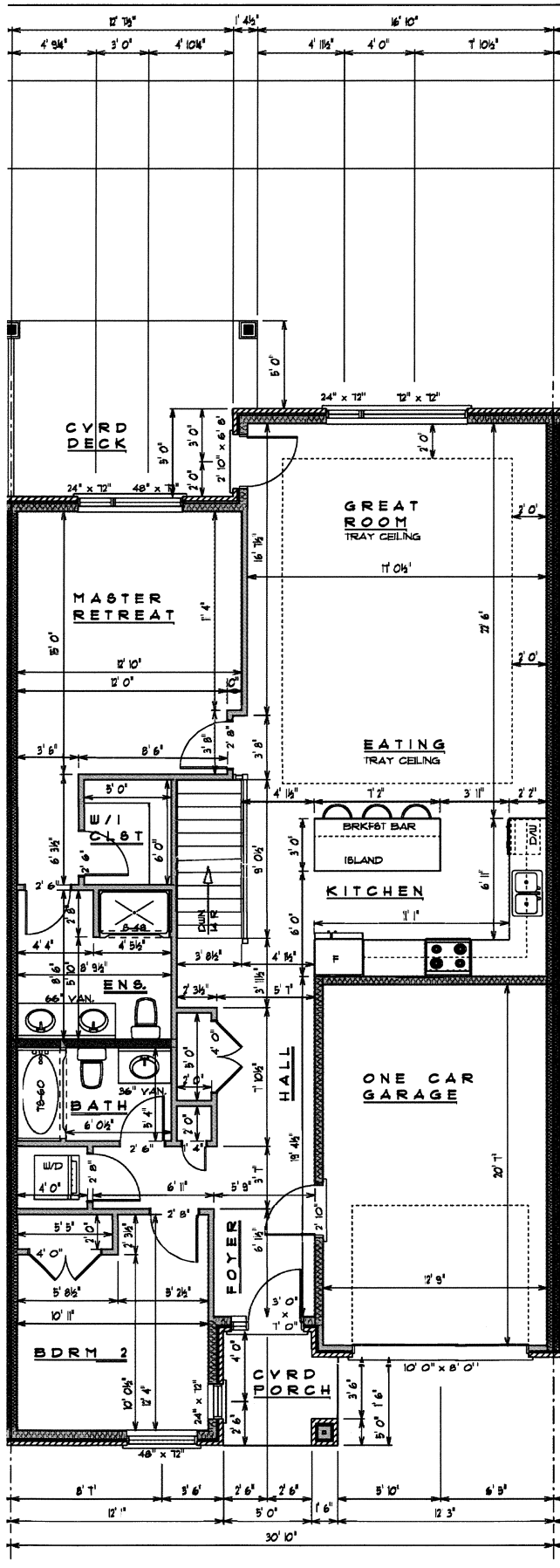
UNIT 1 = 1401 SQ. FT.



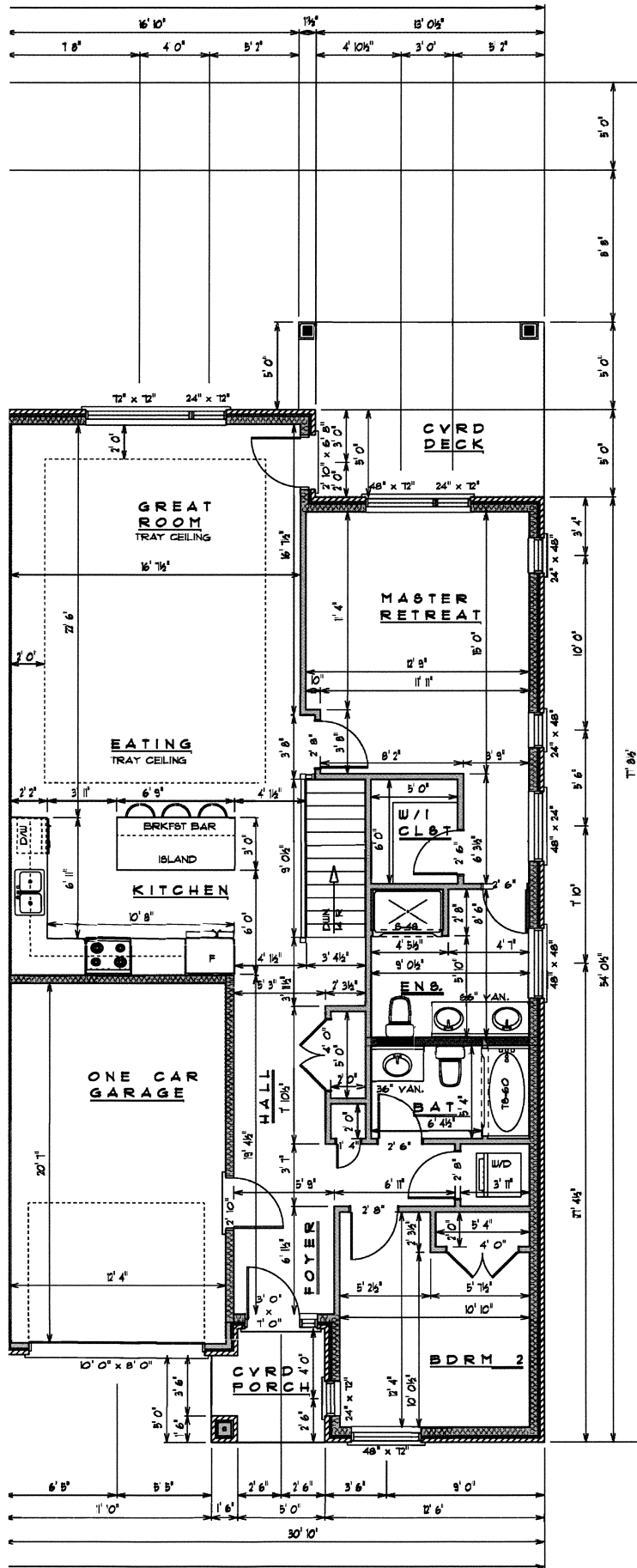
UNIT 2 = 1384 SQ. FT.



UNIT 3 = 1379 SQ. FT.

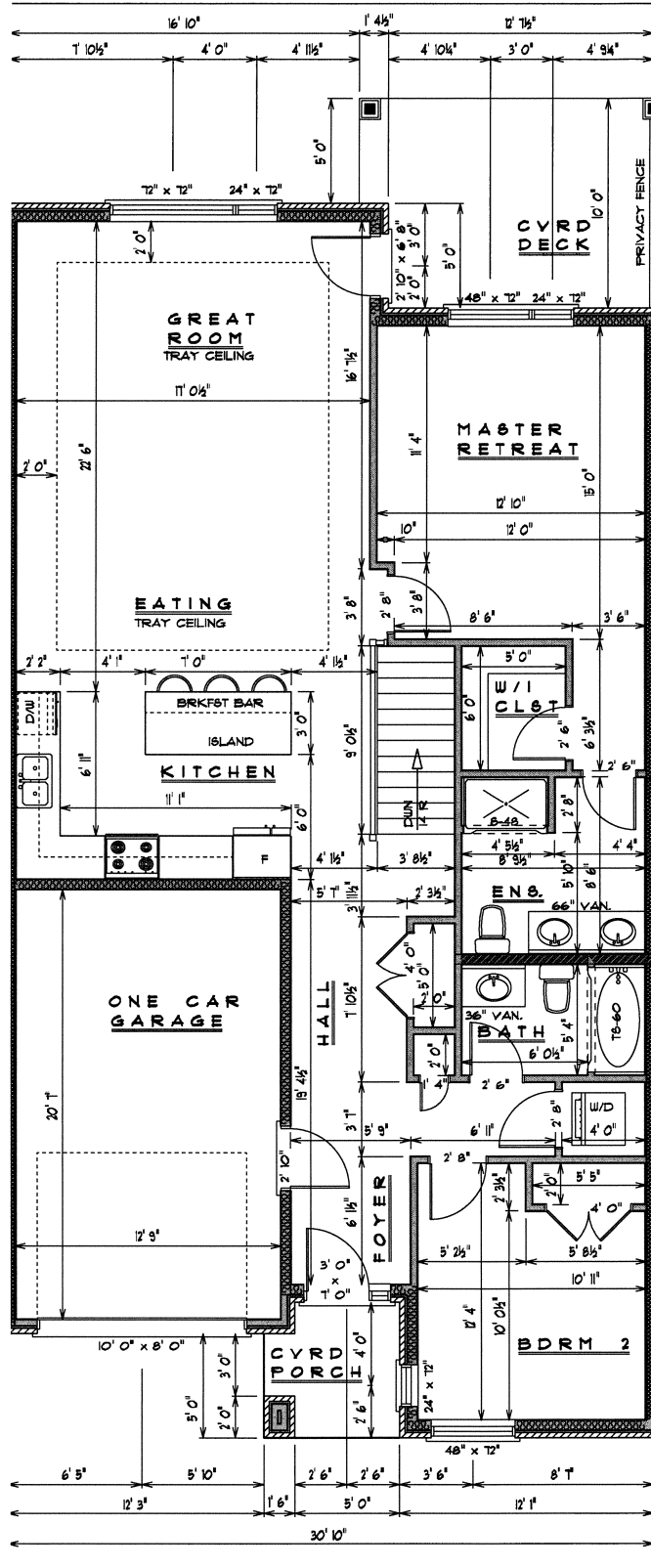


UNIT 4 = 1379 SQ. FT.

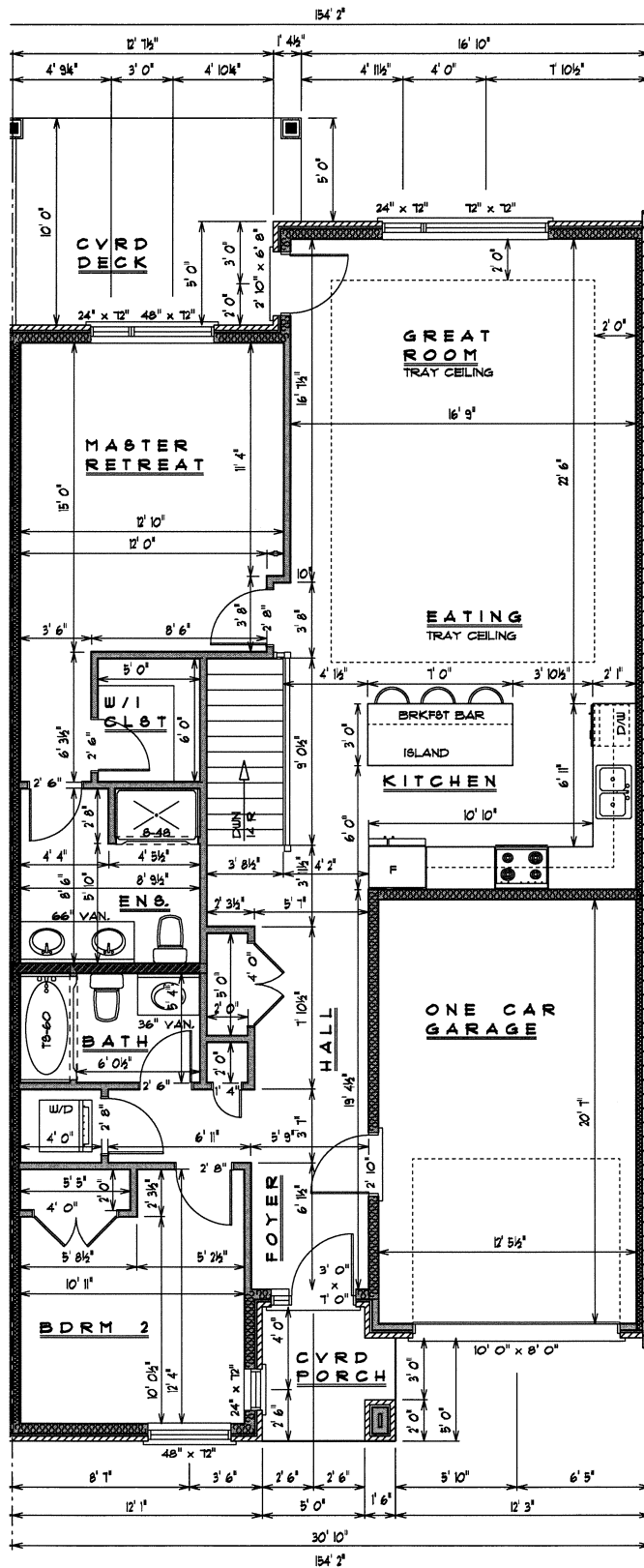


UNIT 5 = 1381 SQ. FT.



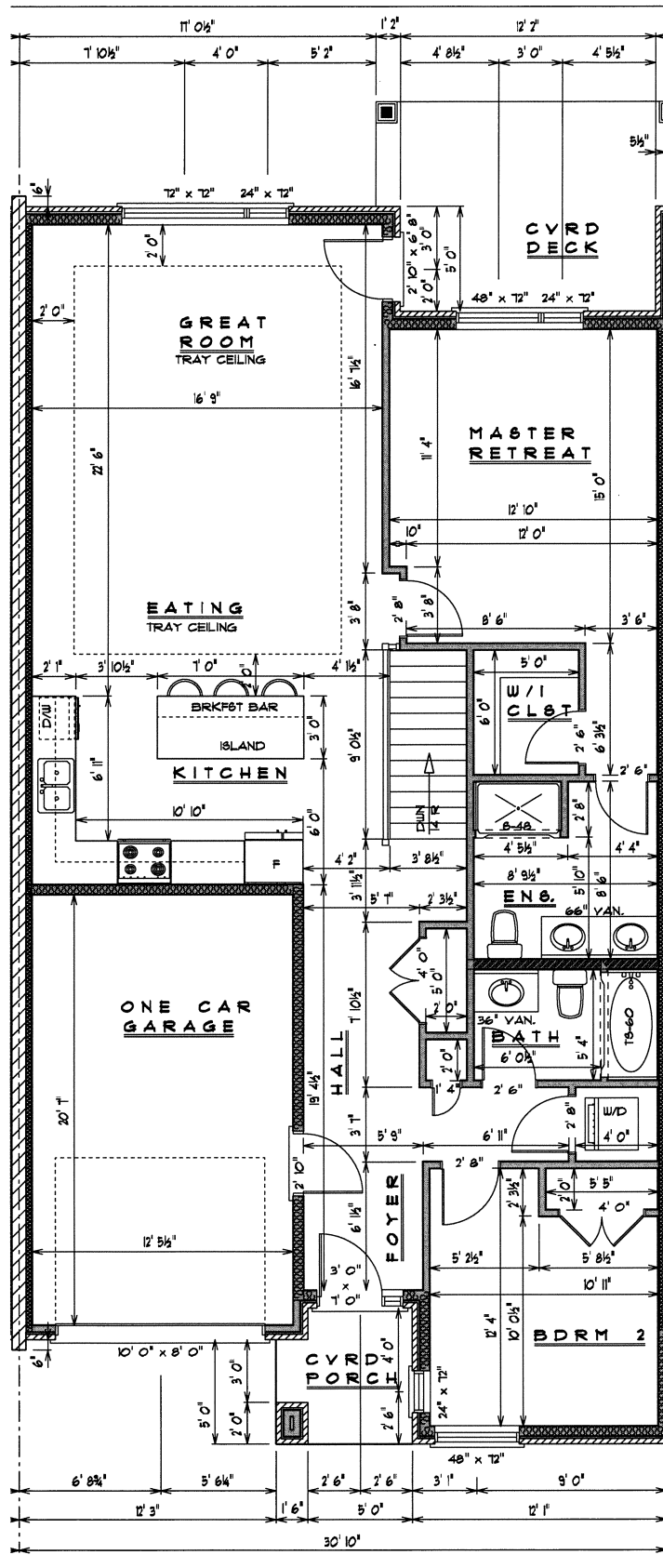


UNIT 7 = 1379 SQ. FT.

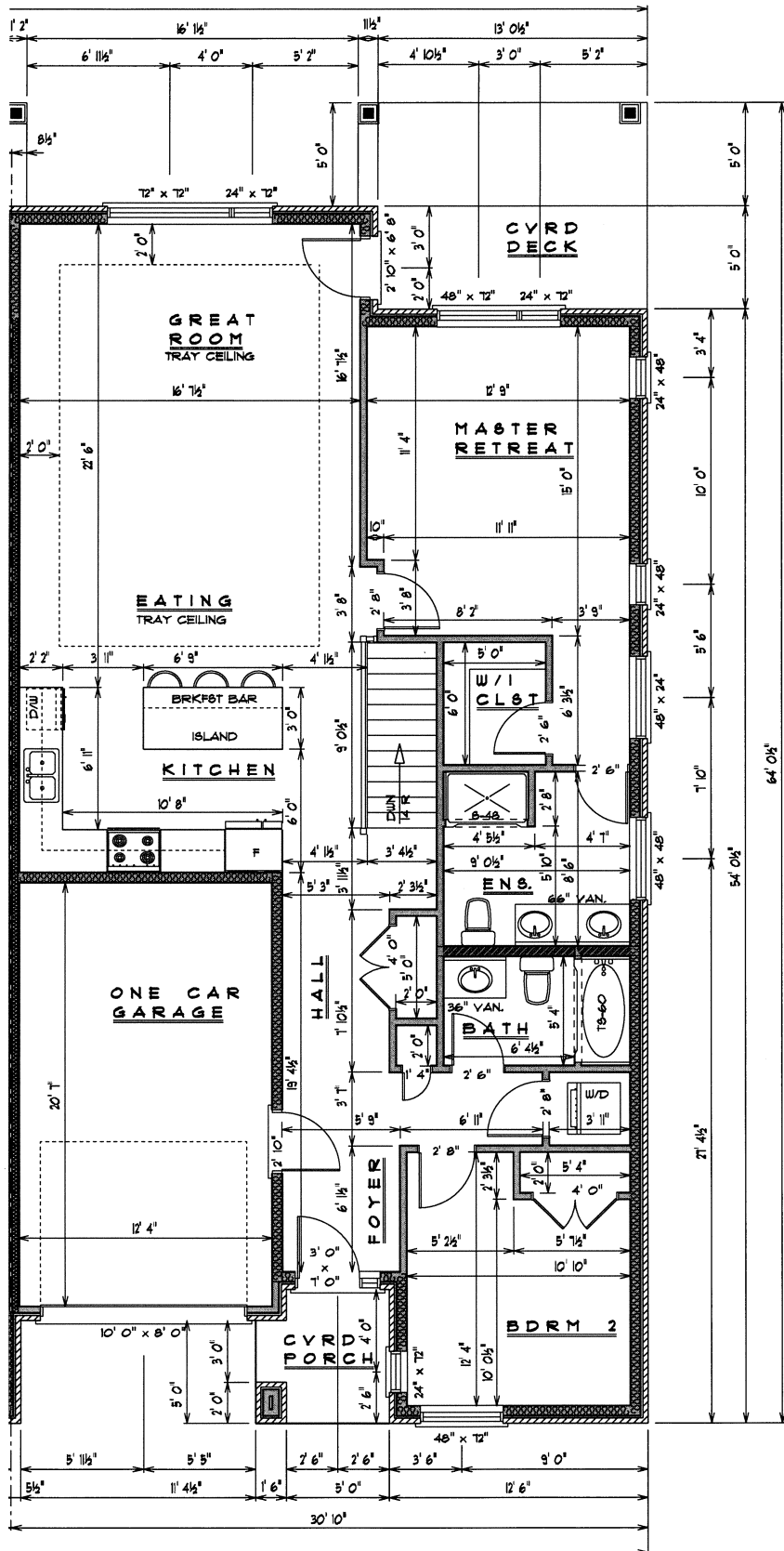


UNIT B = 1379 SQ. FT.



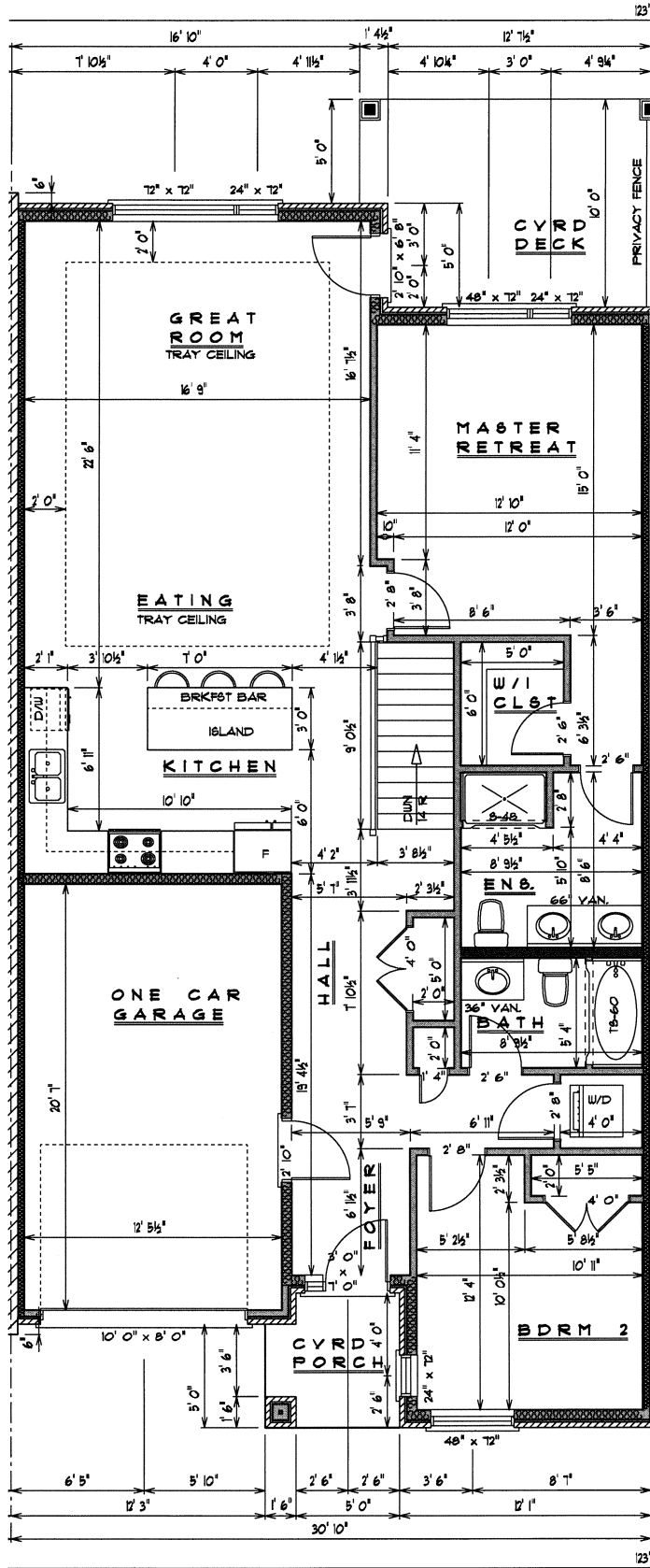


UNIT 9 - 1379 SQ. FT.



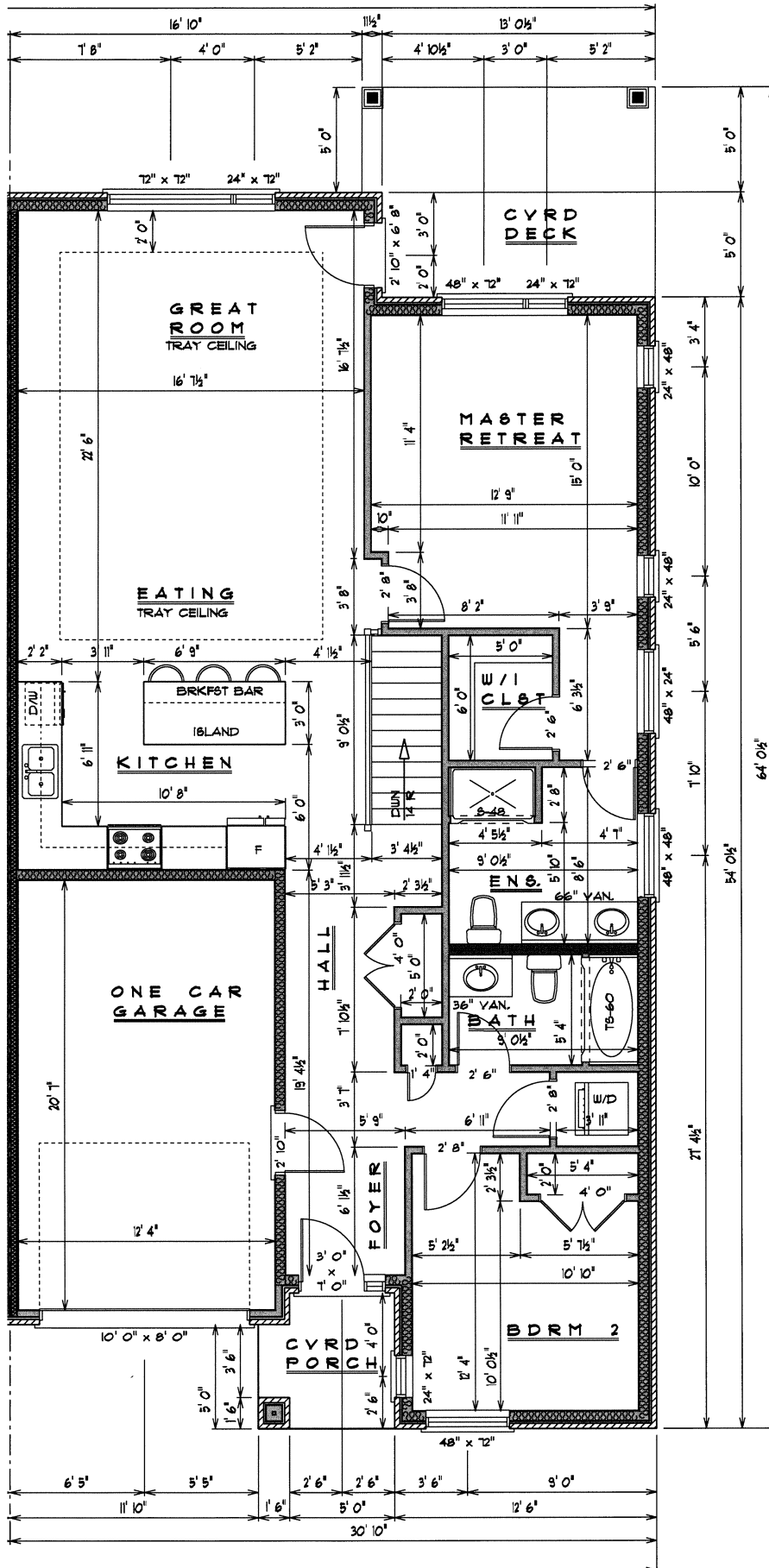
UNIT 10 = 1387 SQ. FT.





UNIT 12 = 1379 SQ. FT.





UNIT 14 = 1387 SQ. FT.